

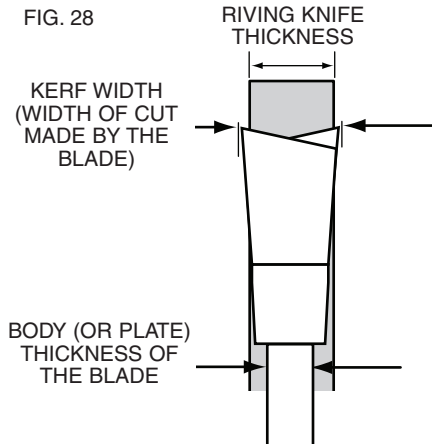
NOTE: All table saws do not have riving knives. Please refer to this information only if your saw is equipped with a riving knife.

Riving Knife Selection

⚠ WARNING: To minimize the risk of kickback and to insure proper cutting, the riving knife must be the proper thickness for the blade used.

The riving knife supplied with each table saw is the correct size for the blade supplied with the saw.

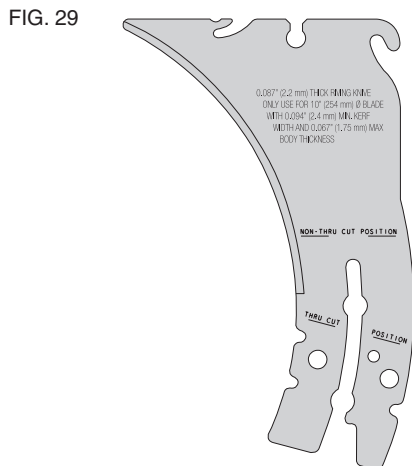
If a different blade is used, check the blade body, or plate, thickness and the blade kerf, or cutting, width marked on the blade or on the blade packaging. The riving knife thickness must be greater than the body thickness and less than the kerf width as shown in Fig. 28. If it is not, the riving knife **MUST** be replaced with one that has the correct thickness.



The riving knife provided with your DEWALT saw will be marked with the riving knife thickness, the blade diameter, minimum kerf and maximum body thickness it will accommodate. Each accessory riving knife offered by DEWALT will also be marked with the same information for that riving knife.

The riving knife example below (Fig. 29) is marked as follows:

0.087" (2.2 mm) THICK RIVING KNIFE. ONLY USE FOR 10" (254 mm) Ø BLADE WITH 0.094" (2.4 mm) MIN. KERF WIDTH AND 0.067" (1.75 mm) MAX. BODY THICKNESS.

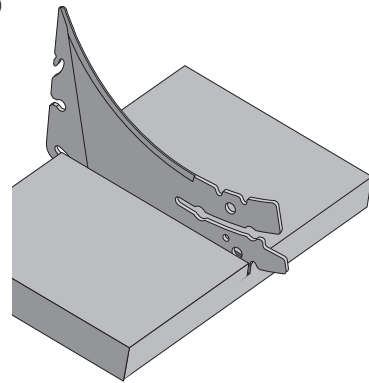


All DEWALT blade body thickness and kerf widths are provided at www.dewalt.com.

If a different blade is used and the body thickness and kerf width dimensions are not provided, use the following procedure to determine the correct riving knife thickness:

1. Measure the body thickness of the blade.
2. Make a shallow cut in scrap material and measure the kerf width.
3. Select the riving knife as shown in Fig. 28.
4. Slide the riving knife through the shallow cut made in step 2 to confirm the correct riving knife has been selected. The riving knife should not bind or drag through the cut. (Fig. 30)

FIG. 30



IMPORTANT: If any dragging or binding of the material is encountered as it reaches the riving knife, turn unit off and disconnect machine from power source. Repeat steps 1–4 to make the proper riving knife selection before attempting another cut.